

CLEVISES (US & METRIC)

FEATURES & BENEFITS

- Precision machined
- Commonly used with REBs
- Male threads

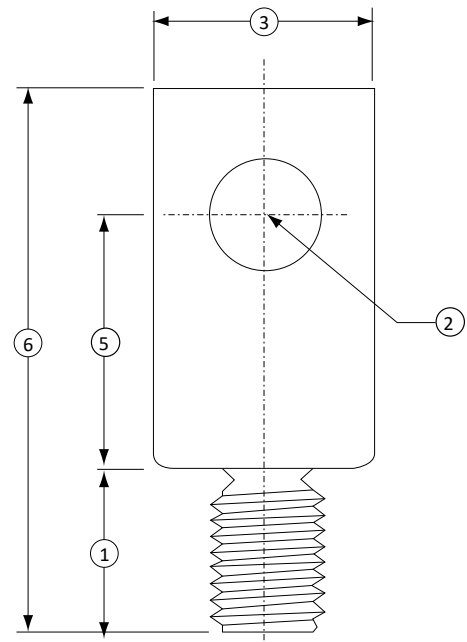
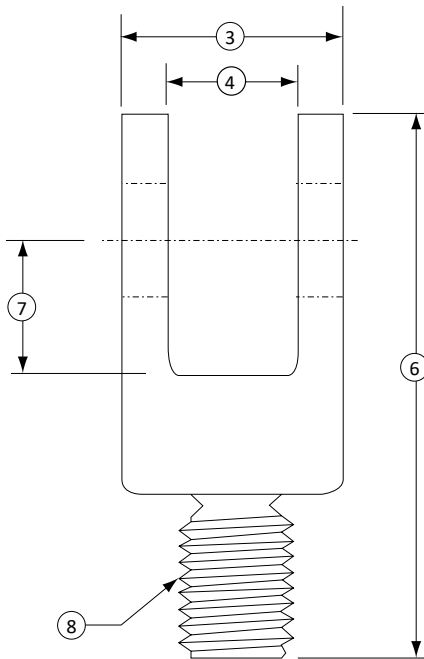
SPECIFICATIONS

MECHANICAL		
Model	CLV-104 CLV-105	CLV-101 CLV-102 CLV-106
Material	Aluminum	Heat treated steel

STANDARD CONFIGURATION



Models CLV-104 & CLV-102 (shown)



DIMENSIONS

Model	CLV-104		CLV-105		CLV-106		CLV-101		CLV-102	
Application	SM-10 THRU 250 SSM-50 THRU 250		SM-500,1000 SSM-500 THRU 1000		SSM-2000,3000		1110 & 1210-300 THRU 10K,SSM-5K		1120 & 1220-25K, 50K	
	in	mm	in	mm	in	mm	in	mm	in	mm
(1)	5/16	7.9	1/2	12.7	5/16	14.3	7/8	22.2	1 3/8	34.9
(2)	0.251 ±0.001	6.38 ±0.025	0.501 ±0.001	12.73 ±0.025	0.501 ±0.001	12.73 ±0.025	0.626 ±0.001	15.90 ±0.025	1.001 ±0.001	25.43 ±0.025
(3)	0.75	19.1	1.5	38.1	1	25.4	1.25	31	2.5	64
(4)	0.377 ±0.001	9.58 ±0.025	0.627 ±0.001	15.93 ±0.025	0.627 ±0.001	15.93 ±0.025	0.752 ±0.002	19.10 ±0.05	1.380 ±0.002	35.05 ±0.05
(5)	0.75	19.1	1.5	38.1	1.5	38.1	1.5	38.1	2.875	73.03
(6)	1.4375	36.513	2.75	69.9	2.4375	61.913	3.125	79.38	5.75	146.1
(7)	0.4375	11.113	0.75	19.1	0.75	19.1	0.875	22.23	1.625	41.28
(8)	1/4-28	M6x1	1/2-20	M14x2	1/2-20	M14x2	5/8-18	M18x2	1 1/4-12	M36x4